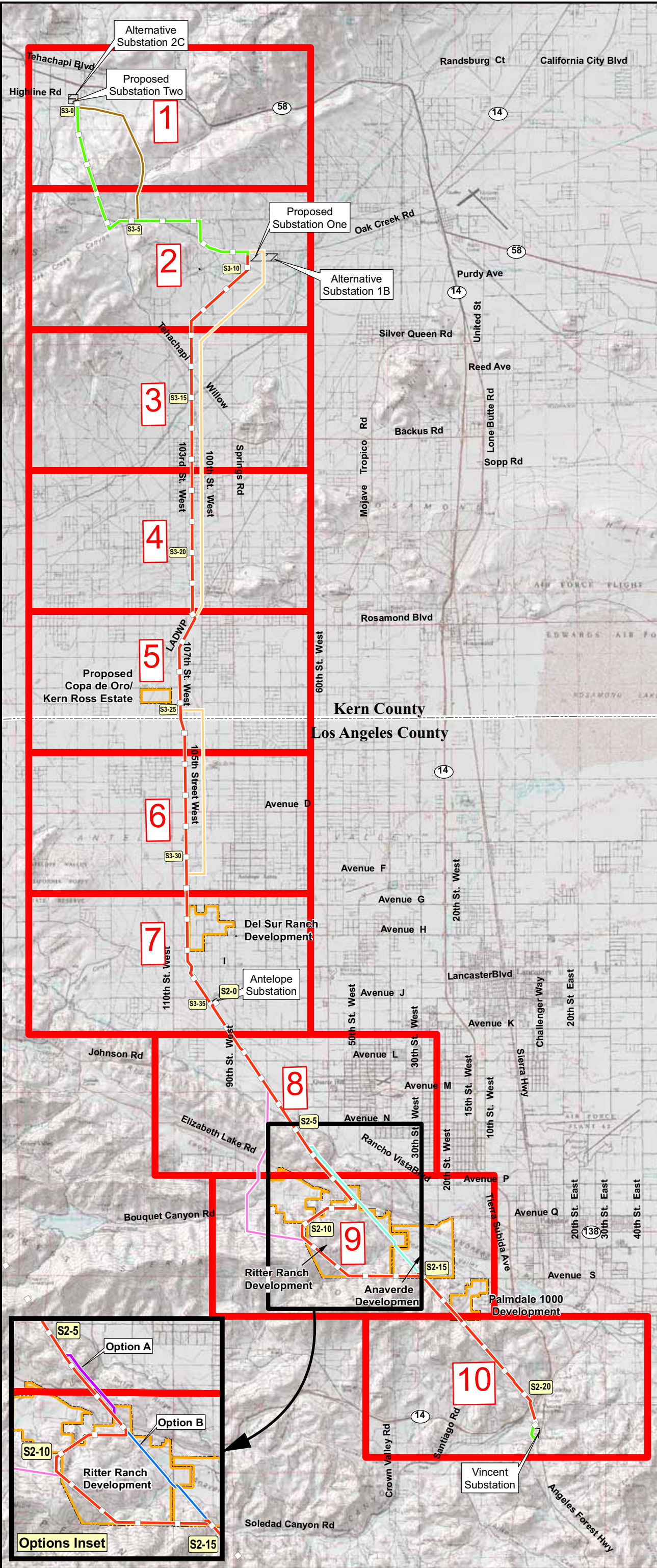

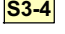





Appendix 4.
Proposed Project and Alternative Route Maps









Legend

Proposed Project

-  Proposed Project - (500 kV)
-  Mileposts
-  Proposed Project - (220 kV)
-  Option A Deviation - Proposed Project (Segment 2)
-  Option B Deviation - Proposed Project (Segment 2)

Alternatives

-  Alternative 1: Substation 2C to Substation One via Cameron Canyon Road (Segment 3B)
-  Alternative 2: Substation 1B to Antelope Substation via 100th Street (Segment 3A/3B)
-  Alternative 3: Antelope - Vincent Re-route 1 (Segment 2)
-  Alternative 4: Antelope - Vincent Re-route 2 (Segment 2)

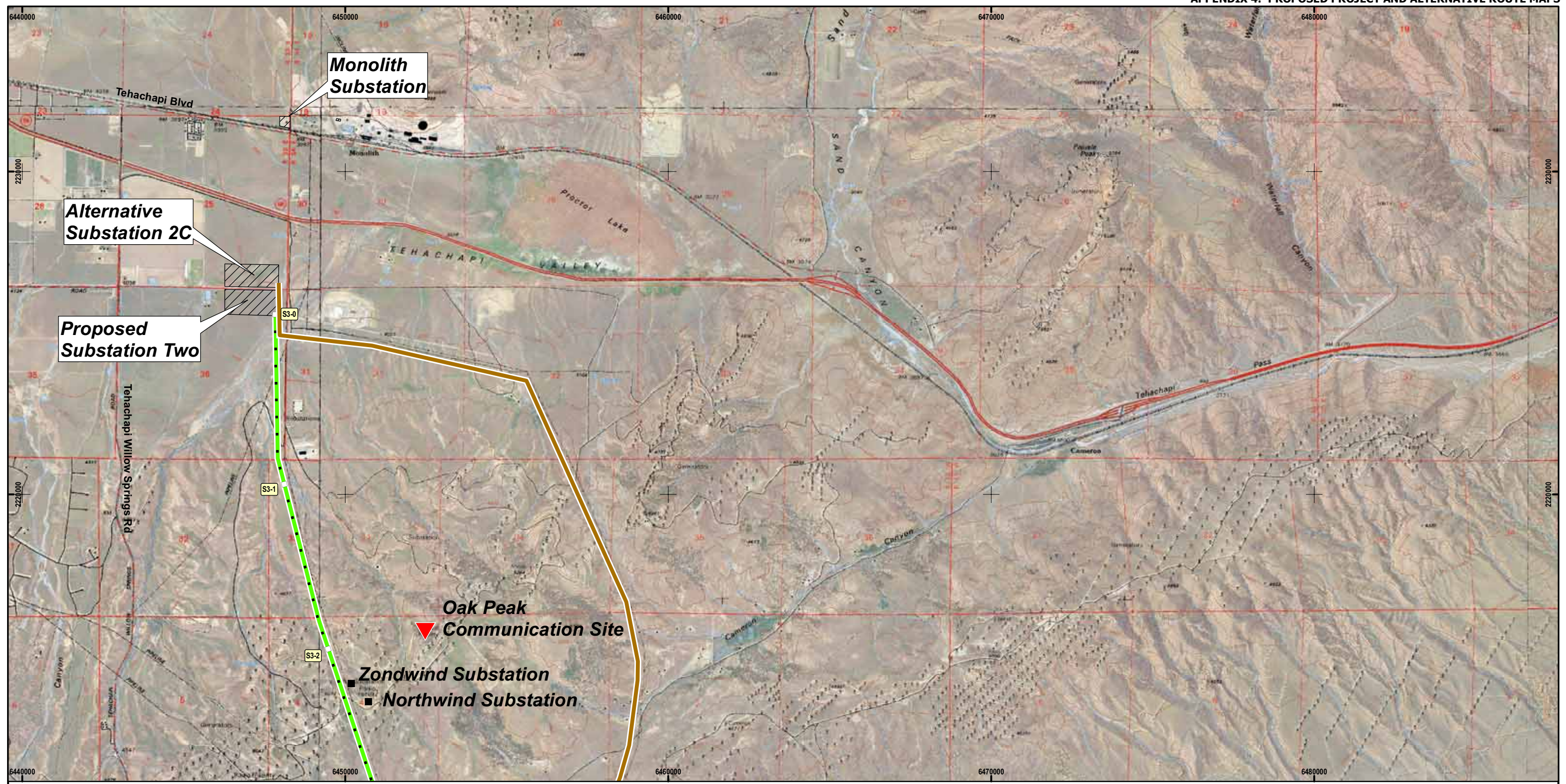
-  Substations
-  Developments



Printing Date: June 28, 2006
 Projection Information:
 Name: NAD 1983 StatePlane California VI FIPS 0406
 Projection: Lambert Conformal Conic
 Datum: North American 1983
 File: Ap_Proposed Project_and Alternatives2.mxd
 GEO/Graphics

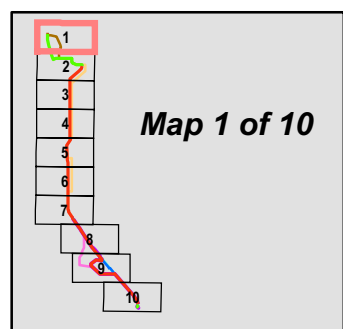




**Proposed Project and Alternatives
 Key Map for Maps 1 through 10**




Aerial Photography Source:
 AirPhoto USA
 Kern County, 2002
 Los Angeles County 2005

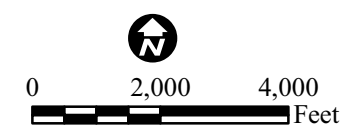
Printing Date: July 5, 2006
 Projection Information:
 Name: NAD 1983 StatePlane California V FIPS 0405 Feet
 Projection: Lambert Conformal Conic
 Datum: North American 1983
 GEO/Graphics

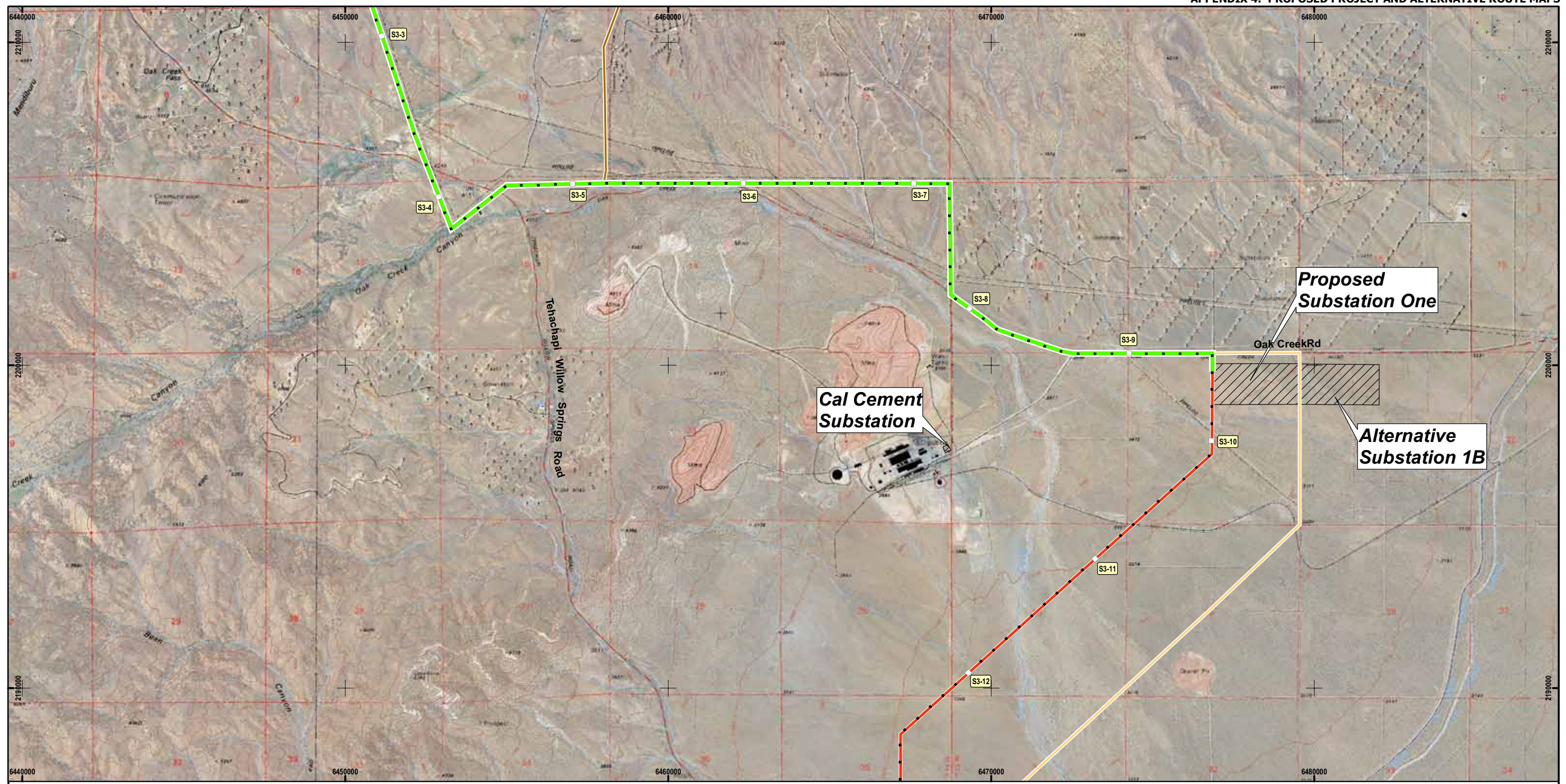


- Legend**
- Proposed Project**
-  Proposed Project - Segment 3 (220 kV)
 -  Substations

- Alternatives to the Proposed Project**
-  Alternative 1: Substation 2C to Substation One via Cameron Canyon Road (Segment 3B)

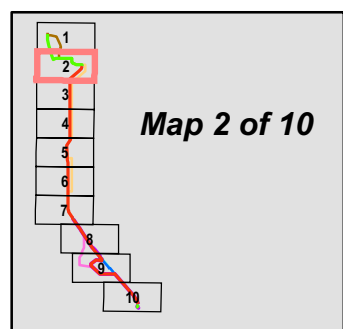
Proposed Project and Alternatives
Map 1 of 10





Aerial Photography Source:
 AirPhoto USA
 Kern County, 2002
 Los Angeles County 2005

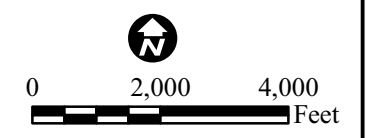
Printing Date: July 5, 2006
 Projection Information:
 Name: NAD 1983 StatePlane California V FIPS 0405 Feet
 Projection: Lambert Conformal Conic
 Datum: North American 1983
 GEO/Graphics

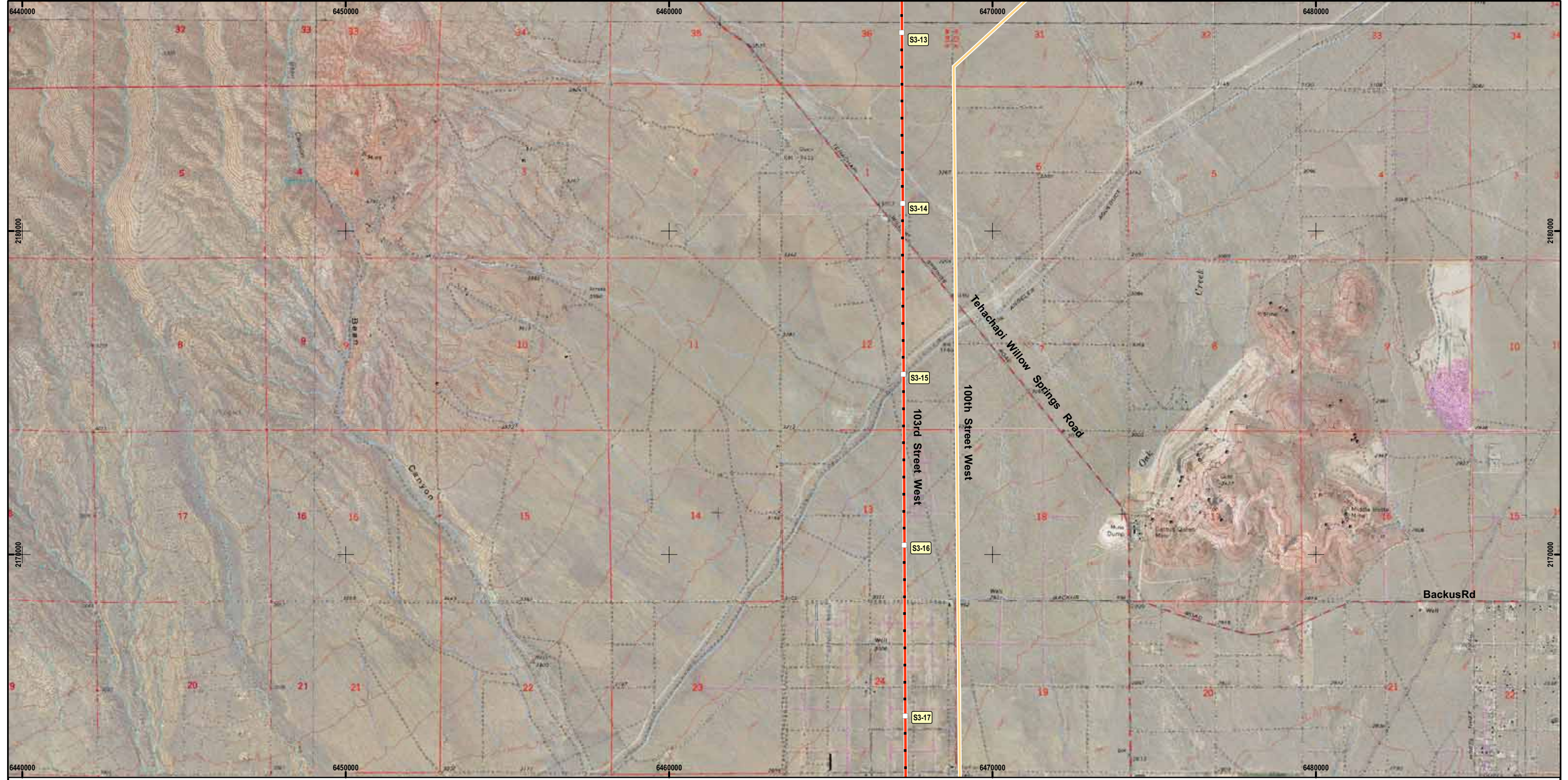


- Legend**
- Proposed Project**
- Proposed Project - Segment 3 (500 kV)
 - Proposed Project - Segment 3 (220 kV)
 - Substations

- Alternatives to the Proposed Project**
- Alternative 1: Substation 2C to Substation One via Cameron Canyon Road (Segment 3B)
 - Alternative 2: Substation 1B to Antelope Substation via 100th Street (Segment 3A/3B)

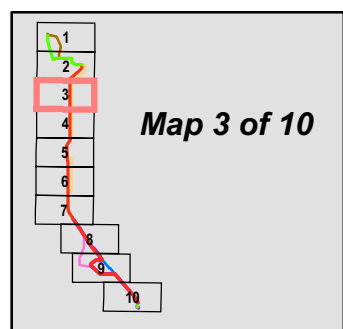
Proposed Project and Alternatives
Map 2 of 10





Aerial Photography Source:
 AirPhoto USA
 Kern County, 2002
 Los Angeles County 2005

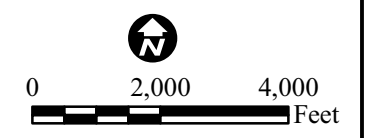
Printing Date: July 5, 2006
 Projection Information:
 Name: NAD 1983 StatePlane California V FIPS 0405 Feet
 Projection: Lambert Conformal Conic
 Datum: North American 1983
 GEO/Graphics

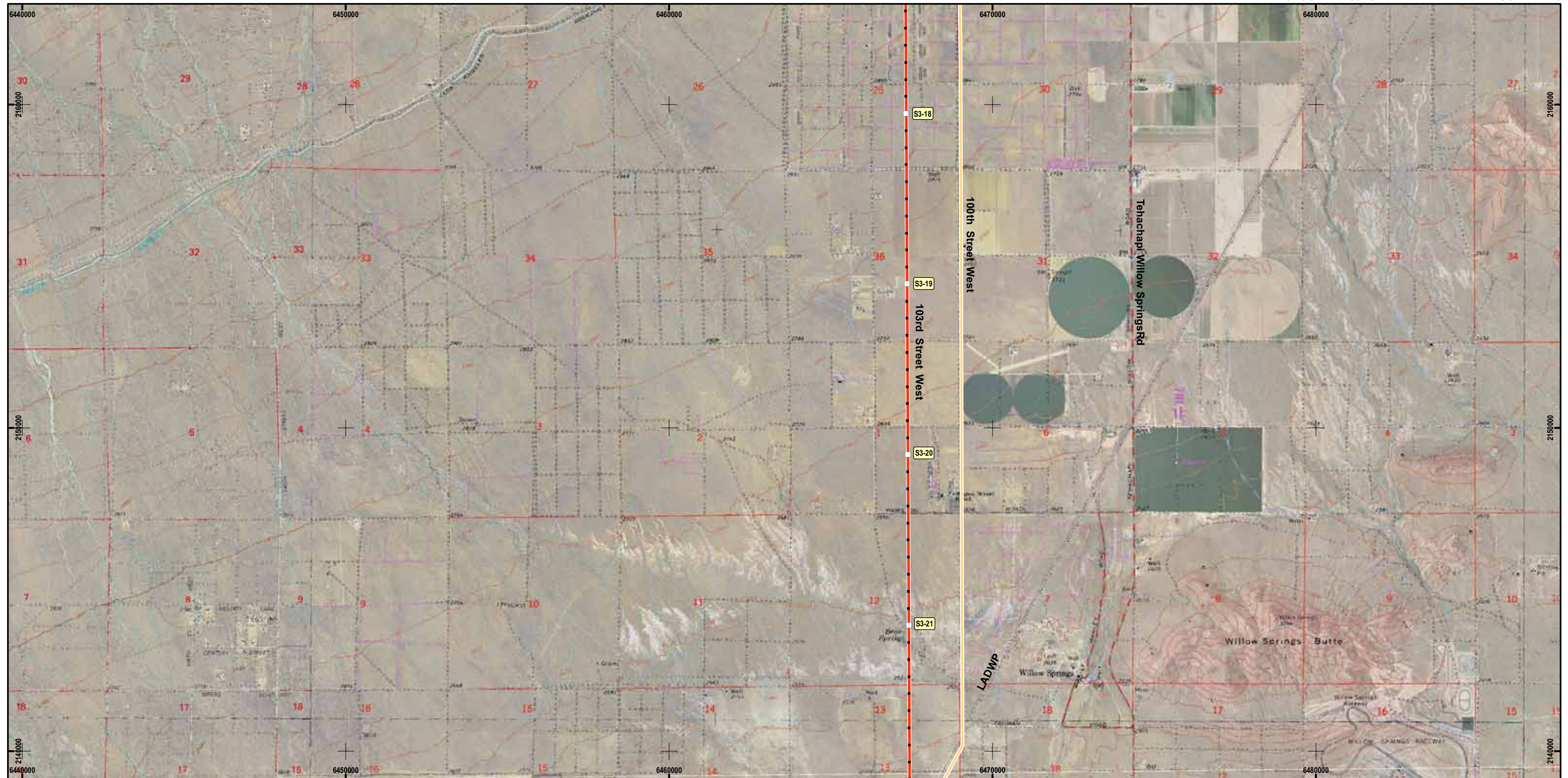


Legend
Proposed Project
 Proposed Project - Segment 3 (500 kV)

Alternatives to the Proposed Project
 Alternative 2: Substation 1B to Antelope Substation via 100th Street (Segment 3A/3B)

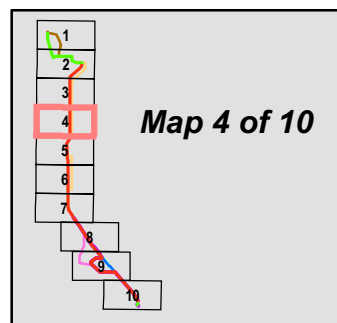
Proposed Project and Alternatives
Map 3 of 10





Aerial Photography Source:
 AirPhoto USA
 Kern County, 2002
 Los Angeles County 2005

Printing Date: July 5, 2006
 Projection Information:
 Name: NAD 1983 StatePlane California V FIPS 0405 Feet
 Projection: Lambert Conformal Conic
 Datum: North American 1983
 GEO/Graphics




Legend

Proposed Project

 Proposed Project - Segment 3 (500 kV)

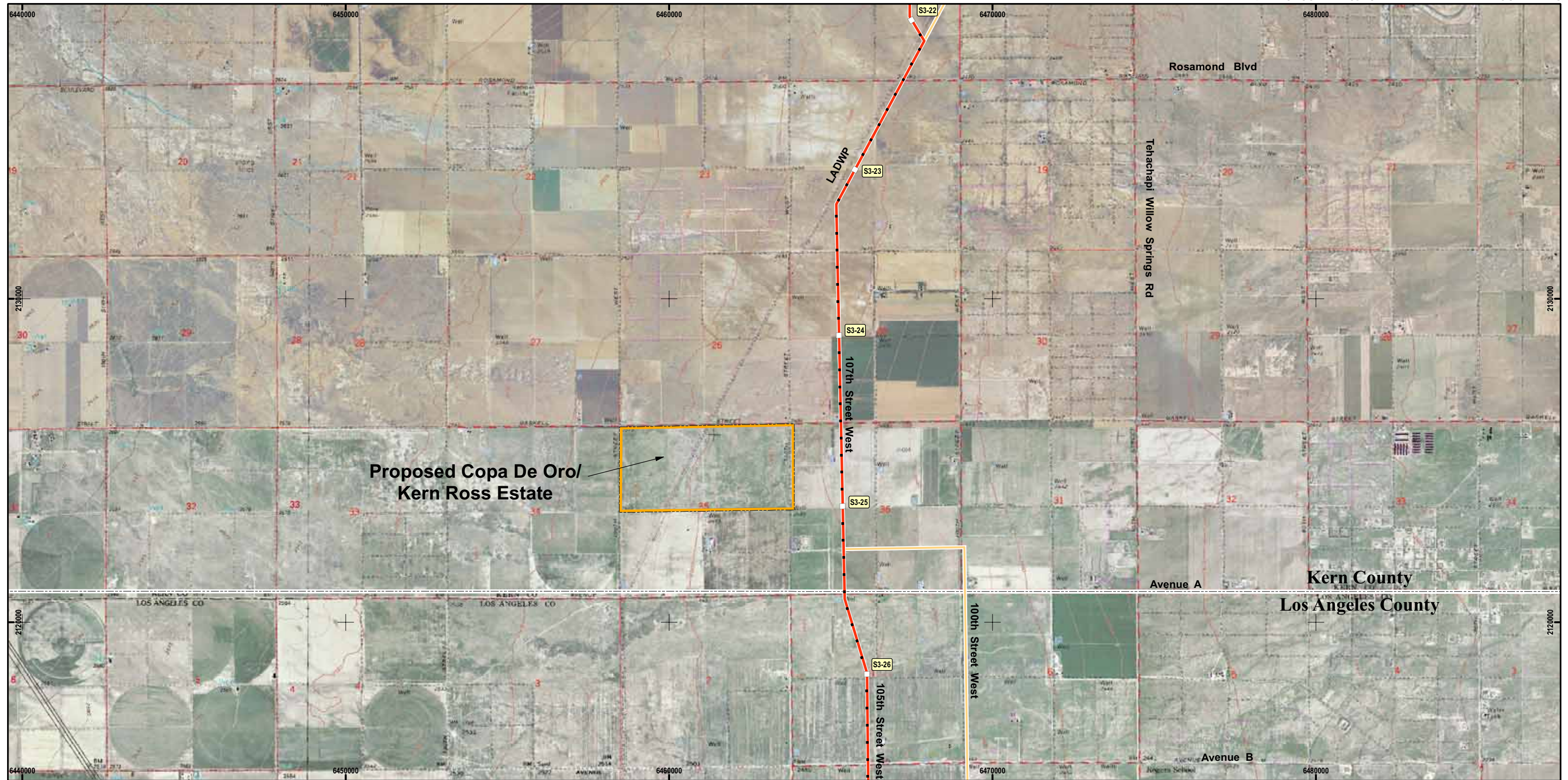
Alternatives to the Proposed Project

 Alternative 2: Substation 1B to Antelope Substation via 100th Street (Segment 3A/3B)




Proposed Project and Alternatives


Map 4 of 10

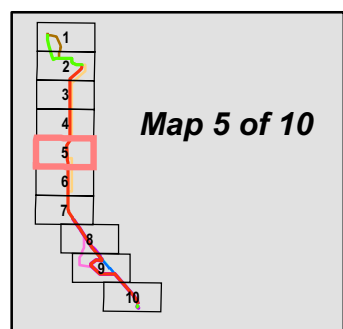




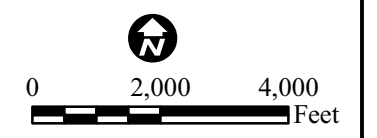
**Proposed Copa De Oro/
 Kern Ross Estate**

- Legend**
-  **Proposed Project**
 -  Proposed Project - Segment 3 (500 kV)
 -  **Developments**

- Alternatives to the Proposed Project**
-  **Alternative 2: Substation 1B to Antelope Substation via 100th Street (Segment 3A/3B)**



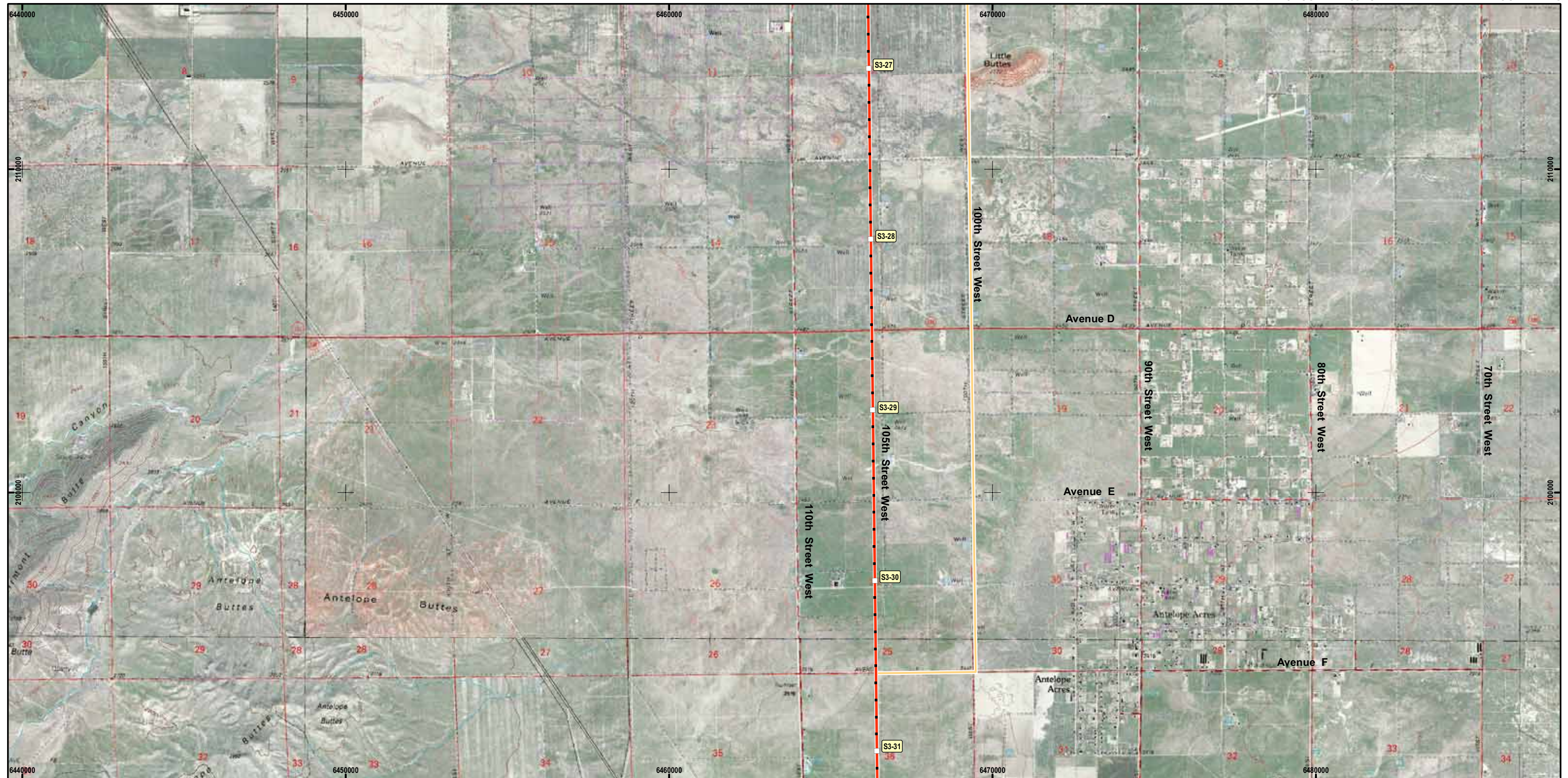
Proposed Project and Alternatives
Map 5 of 10



Aerial Photography Source:
 AirPhoto USA
 Kern County, 2002
 Los Angeles County 2005

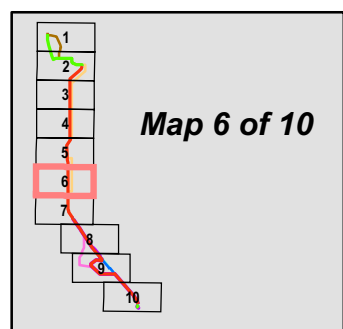
Printing Date: July 5, 2006
 Projection Information:
 Name: NAD 1983 StatePlane California V FIPS 0405 Feet
 Projection: Lambert Conformal Conic
 Datum: North American 1983
 GEO/Graphics





Aerial Photography Source:
 AirPhoto USA
 Kern County, 2002
 Los Angeles County 2005

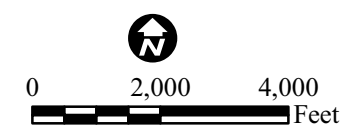
Printing Date: July 5, 2006
 Projection Information:
 Name: NAD 1983 StatePlane California V FIPS 0405 Feet
 Projection: Lambert Conformal Conic
 Datum: North American 1983
 GEO/Graphics

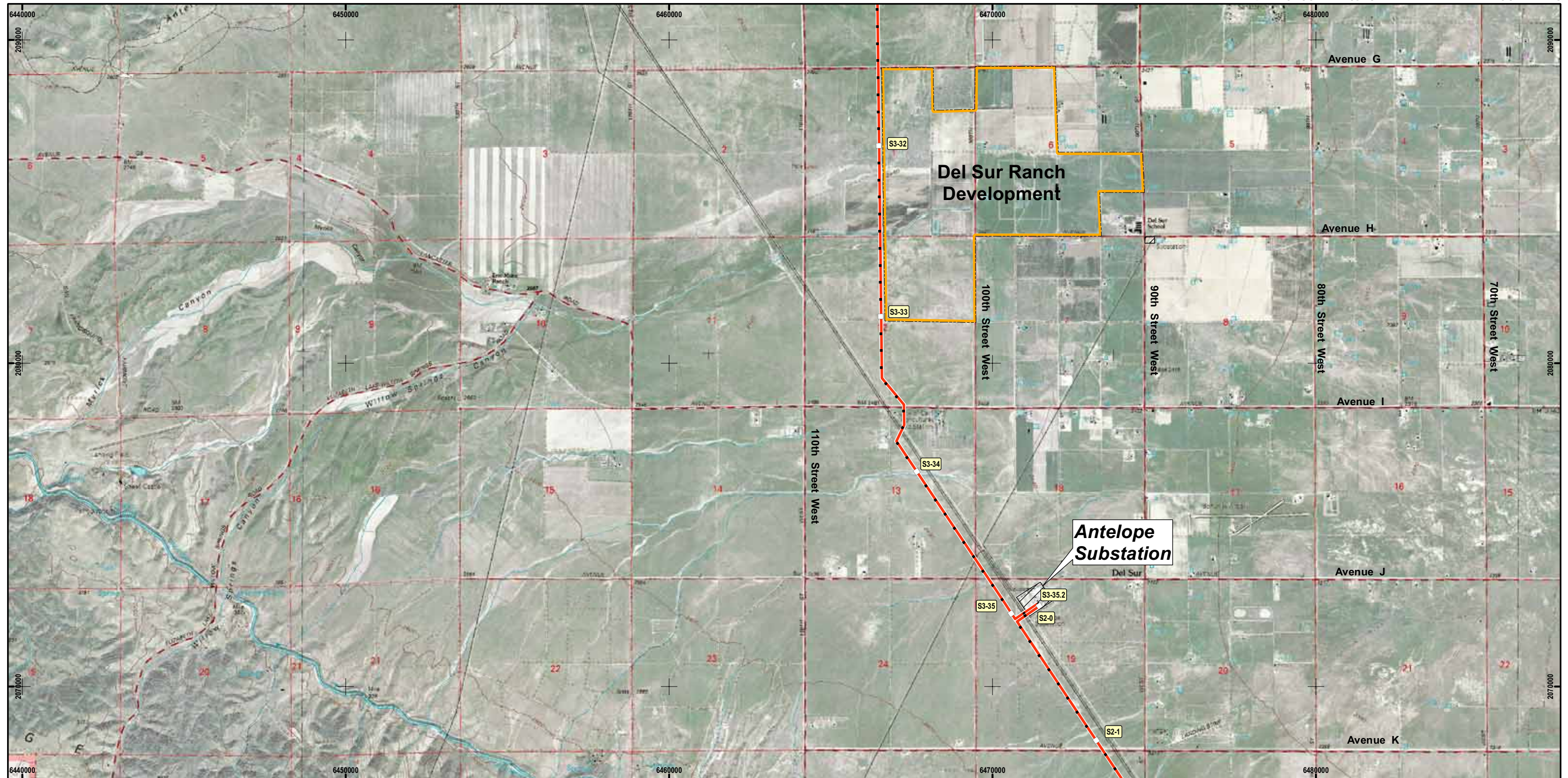


Legend
Proposed Project
 Proposed Project - Segment 3 (500 kV)

Alternatives to the Proposed Project
 Alternative 2: Substation 1B to Antelope Substation via 100th Street (Segment 3A/3B)

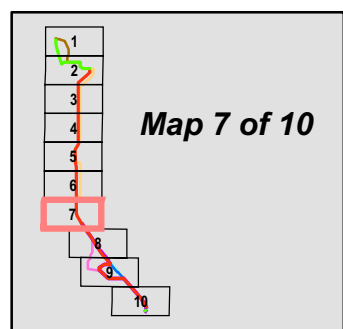
Proposed Project and Alternatives
Map 6 of 10


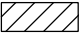





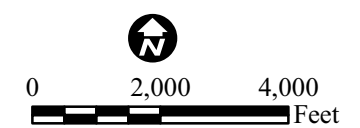
Aerial Photography Source:
 AirPhoto USA
 Kern County, 2002
 Los Angeles County 2005

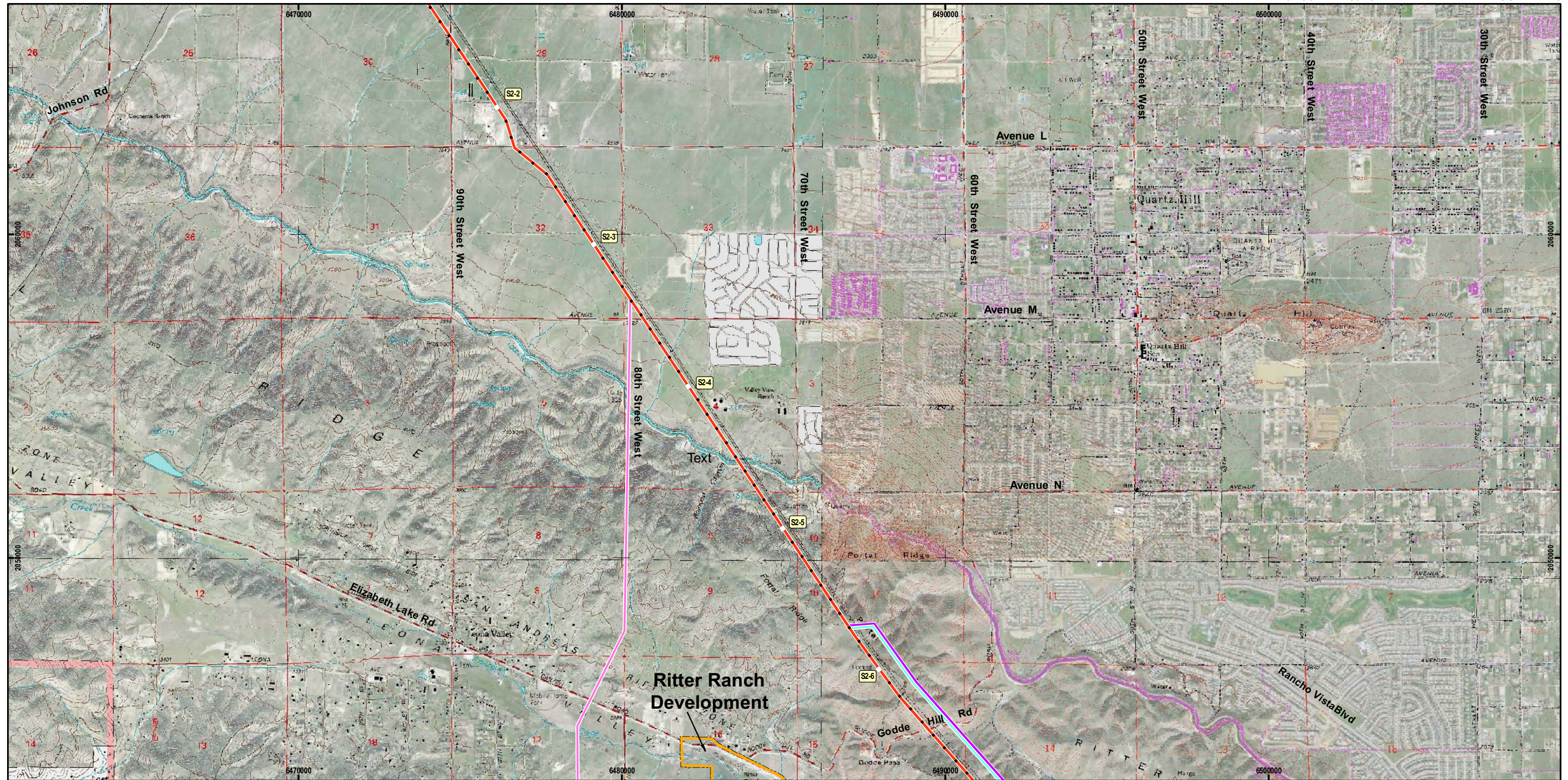
Printing Date: July 5, 2006
 Projection Information:
 Name: NAD 1983 StatePlane California V FIPS 0405 Feet
 Projection: Lambert Conformal Conic
 Datum: North American 1983
 GEO/Graphics



- Legend**
-  Proposed Project - Segments 2 & 3 (500 kV)
 -  Substations
 -  Developments

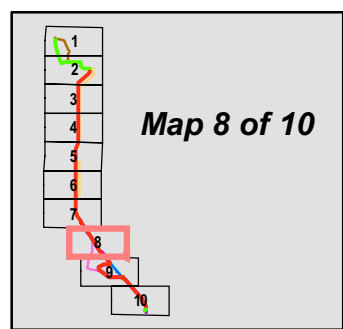
Proposed Project and Alternatives
 Map 7 of 10








Aerial Photography Source:
 AirPhoto USA
 Kern County, 2002
 Los Angeles County 2005

Printing Date: July 5, 2006
 Projection Information:
 Name: NAD 1983 StatePlane California V FIPS 0405 Feet
 Projection: Lambert Conformal Conic
 Datum: North American 1983
 GEO/graphics





Legend

Proposed Project

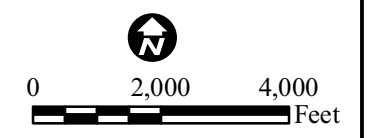
-  Proposed Project - Segment 2 (500 kV)
-  Option A Deviation - Proposed Project (Segment 2)
-  Developments

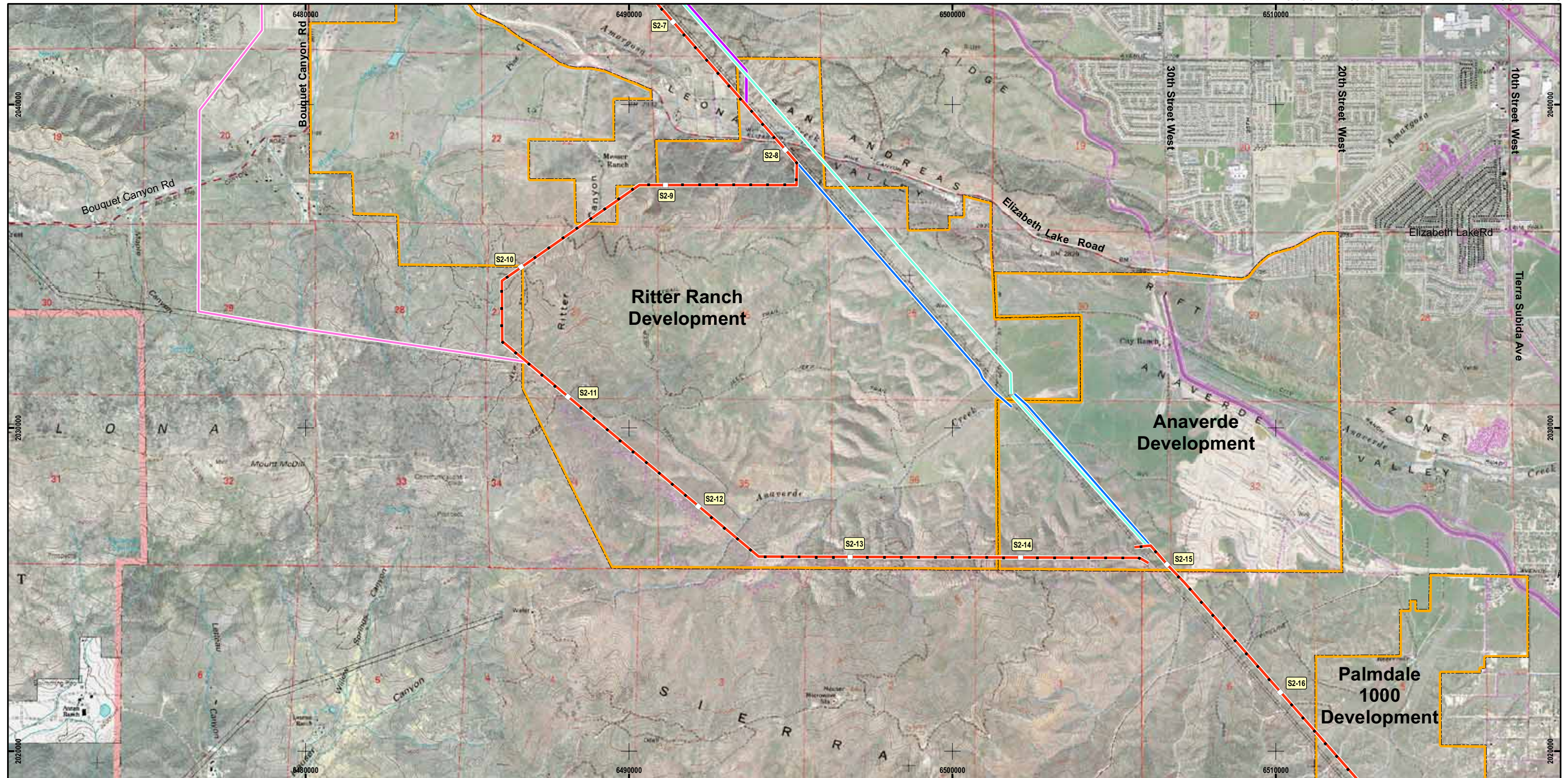
Alternatives to the Proposed Project

-  Alternative 3: Antelope - Vincent Re-route 1 (Segment 2)
-  Alternative 4: Antelope - Vincent Re-route 2 (Segment 2)

Proposed Project and Alternatives

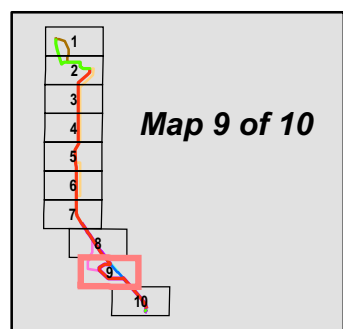
Map 8 of 10









Aerial Photography Source:
 AirPhoto USA
 Kern County, 2002
 Los Angeles County 2005

Printing Date: July 5, 2006
 Projection Information:
 Name: NAD 1983 StatePlane California V FIPS 0405 Feet
 Projection: Lambert Conformal Conic
 Datum: North American 1983
 GEO/Graphics





Legend

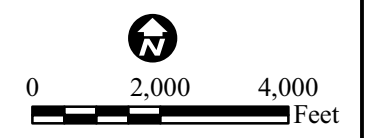
Proposed Project

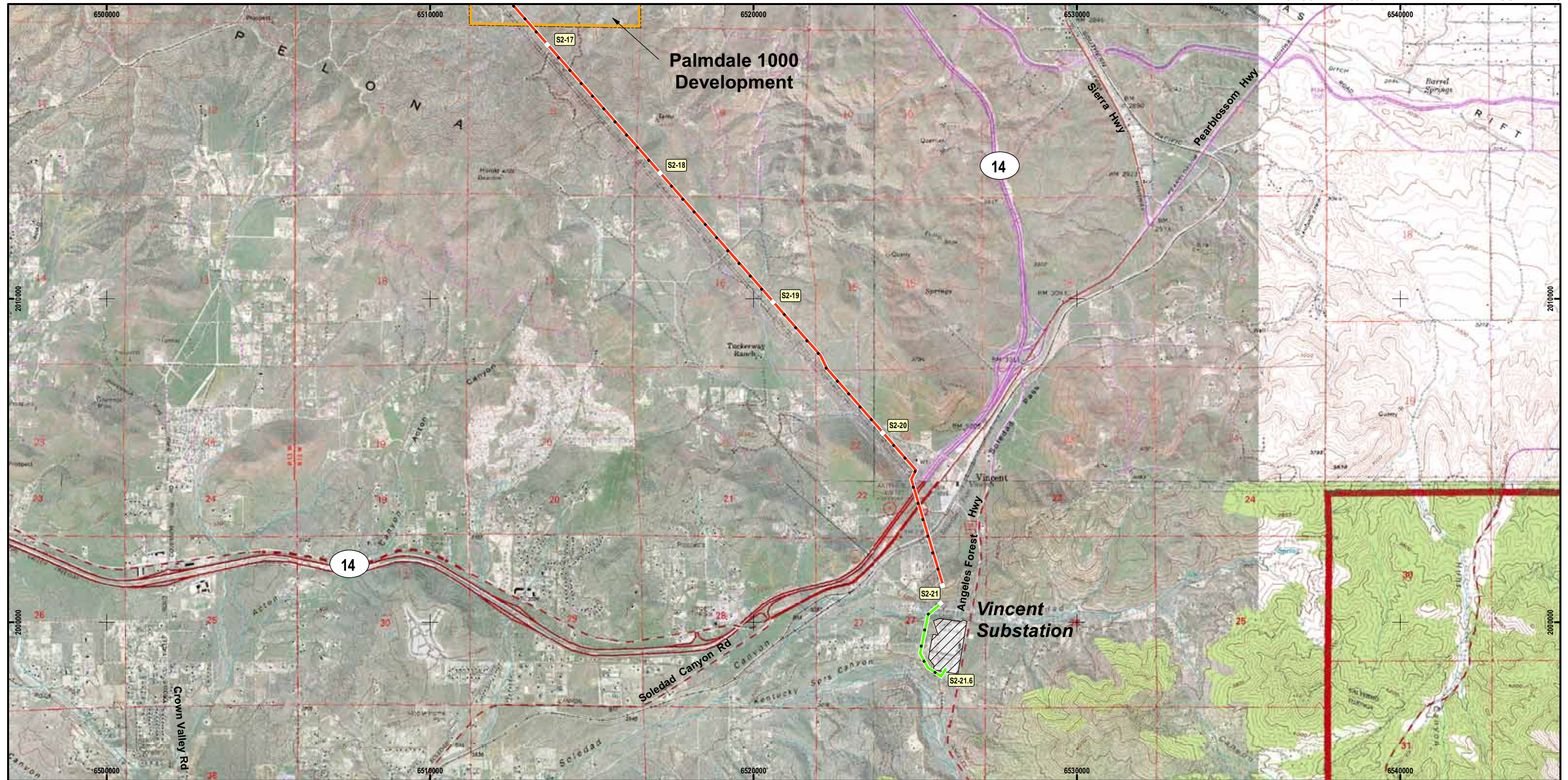
-  Proposed Project - Segment 2 (500 kV)
-  Option A Deviation - Proposed Project (Segment 2)
-  Option B Deviation - Proposed Project (Segment 2)
-  Developments

Alternatives to the Proposed Project

-  Alternative 3: Antelope - Vincent Re-route 1 (Segment 2)
-  Alternative 4: Antelope - Vincent Re-route 2 (Segment 2)

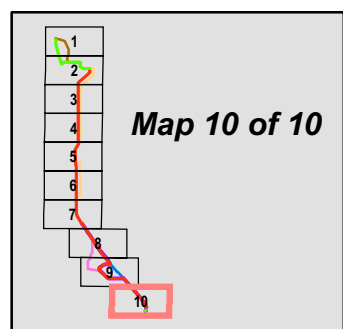
Proposed Project and Alternatives
Map 9 of 10





Aerial Photography Source:
 AirPhoto USA
 Kern County, 2002
 Los Angeles County 2005

Printing Date: July 5, 2006
 Projection Information:
 Name: NAD 1983 StatePlane California V FIPS 0405 Feet
 Projection: Lambert Conformal Conic
 Datum: North American 1983
 GEO/Graphics



- Legend**
- ▬ Proposed Project - Segment 2 (500 kV)
 - ▬ Proposed Project - Segment 2 (220 kV)
 - Substations
 - Developments

Proposed Project and Alternatives
Map 10 of 10

